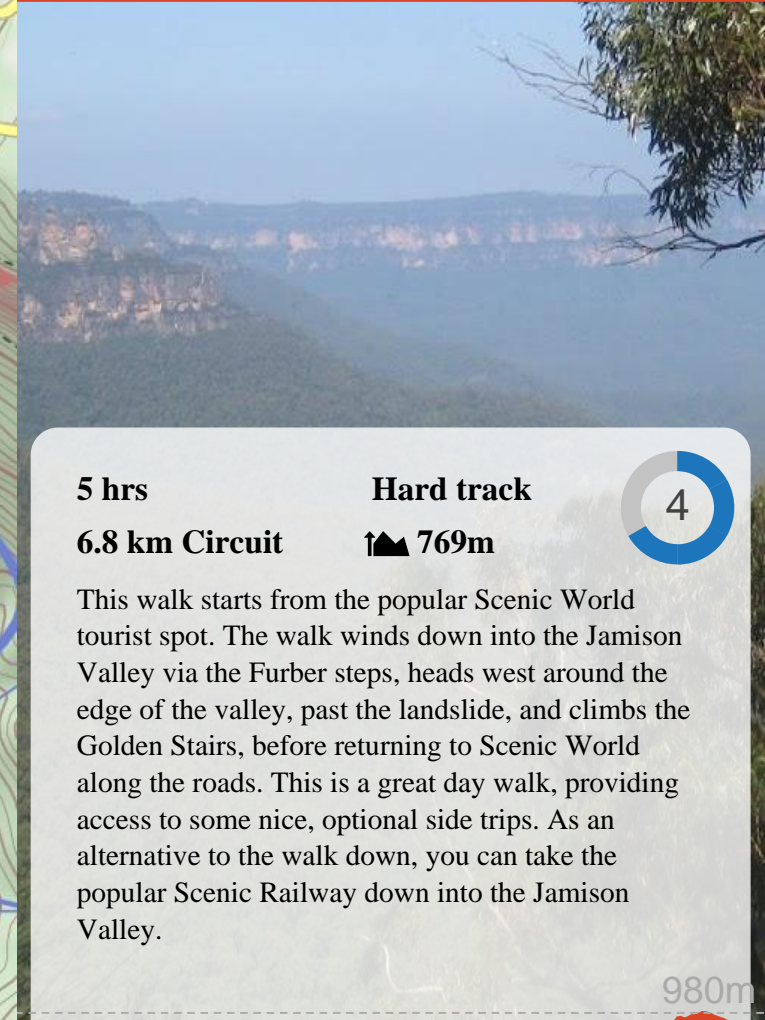


Scenic World down Furber Steps to Narrow Neck loop



5 hrs

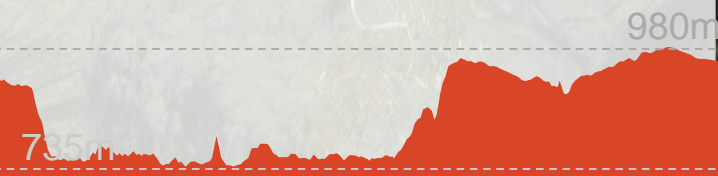
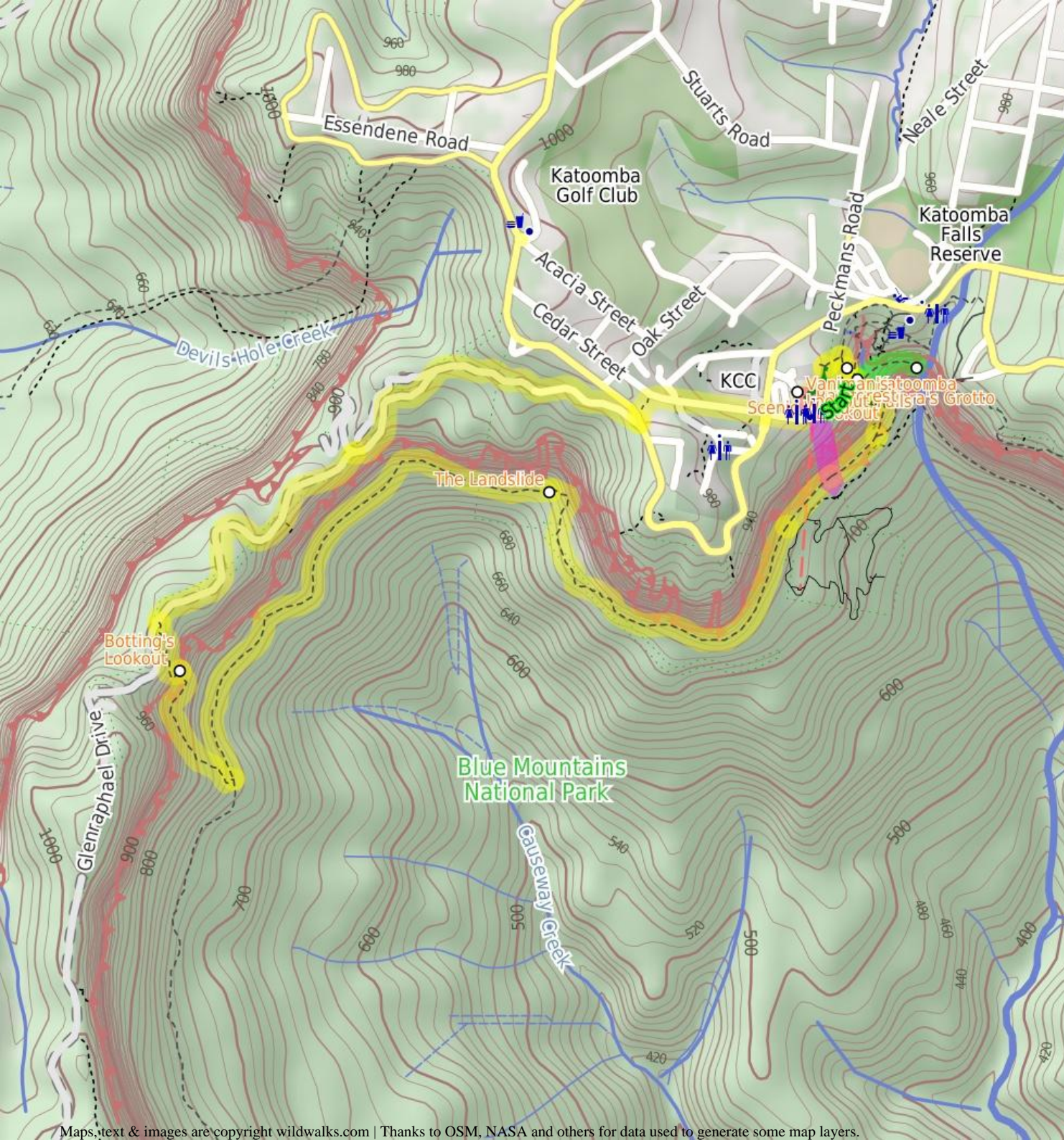
Hard track

4

6.8 km Circuit

769m

This walk starts from the popular Scenic World tourist spot. The walk winds down into the Jamison Valley via the Furber steps, heads west around the edge of the valley, past the landslide, and climbs the Golden Stairs, before returning to Scenic World along the roads. This is a great day walk, providing access to some nice, optional side trips. As an alternative to the walk down, you can take the popular Scenic Railway down into the Jamison Valley.



Blue Mountains National Park

Scenic World

Scenic World is one of the most renowned tourist attractions of Katoomba and the Blue Mountains. Located on the cliffs of the Jamison Valley, visitors can enjoy a ride on the Scenic Railway (the world's steepest incline railway) or the Scenic Cableway, into the Jamison Valley, and explore the Scenic Walkway from the base. Alternatively, the Scenic Skyway offers a bird's eye view over the valley, with a glass floor to enhance the experience. Scenic World also features a revolving restaurant, a cafe and a kiosk, in addition to the documentary theatre and souvenir shop. Rides can be purchased, starting from \$16 for adults and \$10 for children, and combination or family passes are available. [More info.](#)

Vaniman's Lookout

Vaniman's Lookout is a fenced, long and narrow lookout on the cliff edge, opposite Reids Plateau. The view looks directly over the Three Sisters across the Kedumba Valley, under the Scenic Skyway. The lookout was considered one of the finest views on the Three Sisters in the 1900's. The lookout was named after Chester Melvin Vaniman in 1905, a well-know adventurer and artist from the USA, who visited the Blue Mountains in 1903. [More info.](#)

Rainforest Lookout

Unlike many lookouts in the area, Rainforest Lookout does not offer sweeping valley views. Instead, this lookout offers an opportunity to get up close and personal with the canopy of the rainforest. Spend some time in the cool shade listening to the birds and Witches Leap creek passing by. A sign at the lookout explains that there once were wood-fired barbeques here for picnics, but removed due to the toll on the local environment.

Katoomba Falls

The Katoomba Falls are among the most famous waterfalls in the the Blue Mountains region. The Kedumba River falls about 150 meters in 2 main stages. The Undercliff Track, from the Furber Steps, can be used to access the first landing of the waterfall. The Katoomba Falls can be viewed from most lookouts in the the area, including from the bottom of the falls at Cooks Landing on Federal Pass, or from the track running next to the Kedumba River at the top of the falls. These falls are also a highlight for the trip across the Scenic Skyway.

Before You walk

Bushwalking is fun and a wonderful way to enjoy our natural places. Sometimes things go bad, with a bit of planning you can increase your chance of having an enjoyable and safer walk. Before setting off on your walk check

- 1) Weather Forecast ([BOM Central Tablelands District](#))
- 2) Fire Dangers ([Greater Sydney Region](#))
- 3) Park Alerts ([Blue Mountains National Park](#))
- 4) Research the walk to check your party has the skills, fitness and equipment required
- 5) Agree to stay as a group and not leave anyone to walk solo

Think before you TREK

The 'Think before you TREK' program developed by NSW Police & NPWS promotes the benefits of planning ahead for your bushwalking trip by using an easy to remember acronym:

- T** Take adequate supplies of food, water, navigation and first aid equipment.
- R** Register your planned route and tell friends and family when you expect to return.
- E** Emergency beacon (PLB's) should be carried on walks with significant gaps in mobile coverage (check terrain profile).
- K** Keep to your planned route and follow the map and walking trails.

Topo Maps

The maps provided on wildwalks are helpful, but there are times where you may need maps covering a broader area. Maps that cover this walk include;

- 1:50 000 Map Series:**Six Foot Track
1:25 000 Map Series:89301S KATOOMBA
1:100 000 Map Series:8930 KATOOMBA

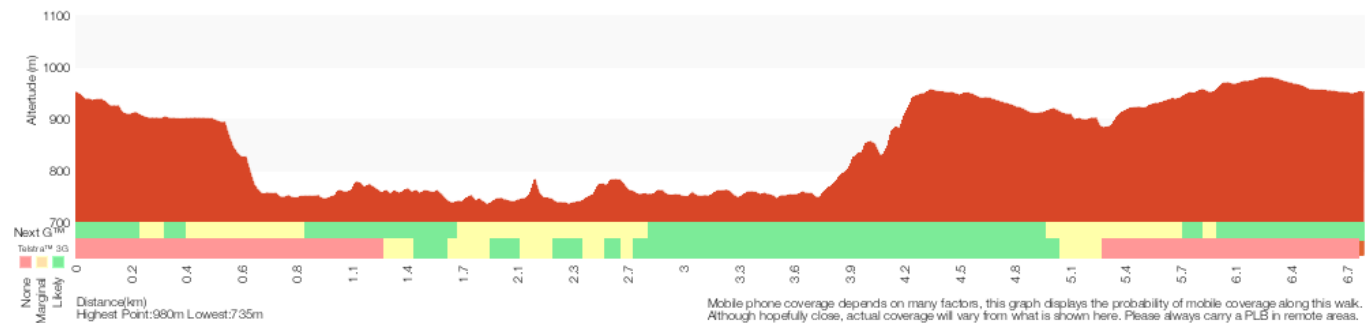
Grade

This walk has been graded using the AS 2156.1-2001. The overall grade of the walk is determined by the highest classification along the whole track.



Grade 4/6
Hard track

Length	6.8 km Circuit
Time	5 hrs
Quality of track	Rough track, where fallen trees and other obstacles are likely (4/6)
Signs	Directional signs along the way (3/6)
Experience Required	Some bushwalking experience recommended (3/6)
Weather	Weather generally has little impact on safety (1/6)
Infrastructure	Limited facilities, not all cliffs are fenced (3/6)



Are you ready to have fun?

Please ensure you and your group are well prepared and equipped for all possible hazards and delays. Check park closures, weather information and Fire Danger Rating before setting out. Optional side trips and alternate routes noted are not included in this walks overall grade, length or time estimate. Please allow extra time for resting and exploring areas of interest. The authors, staff and owners of wildwalks take care in preparing this information but will not accept responsibility for any inconvenience, loss or injury you may experience. Please take care, have fun - Happy Walking.

Getting there You can get to Scenic World (gps: -33.7286, 150.301) by car or bus. Car: There is free parking available.

This is a circuit, so you will finish back at the start.

Find up to date and more information including; travel directions, weather, park closures and walker feedback at <http://wild.tl/swdfstnnl>

0 | Scenic World

Scenic World is one of the most renowned tourist attractions of Katoomba and the Blue Mountains. Located on the cliffs of the Jamison Valley, visitors can enjoy a ride on the Scenic Railway (the world's steepest incline railway) or the Scenic Cableway, into the Jamison Valley, and explore the Scenic Walkway from the base. Alternatively, the Scenic Skyway offers a bird's eye view over the valley, with a glass floor to enhance the experience. Scenic World also features a revolving restaurant, a cafe and a kiosk, in addition to the documentary theatre and souvenir shop. Rides can be purchased, starting from \$16 for adults and \$10 for children, and combination or family passes are available. [More info.](#)

0 | Scenic World

(120 m 3 mins) From the Scenic World main entrance, this walk follows the 'Prince Henry Cliff Walk' signs down the concrete steps and around to the back of the building, where it comes to a wooden footbridge that curves around behind the main car park. At the end of the footbridge, this walk comes to an intersection with the Prince Henry Cliff Walk.

0.12 | End of wooden footbridge

(90 m 2 mins) Continue straight: From the intersection, this walk follows the bush track down the gentle hill, winding down some wooden steps as the track bends around to the right. It then arrives at the signposted intersection of the 'Prince Henry Cliff Walk' and the track to the base of the Scenic Railway.

Turn right: From the intersection, this walk heads down the steep wooden steps, following the signs to the bottom of the Scenic Railway. The walk comes to the intersection of Vanimans Lookout at the bottom of the steps.

0.21 | Vaniman's Lookout

Vaniman's Lookout is a fenced, long and narrow lookout on the cliff edge, opposite Reids Plateau. The view looks directly over the Three Sisters across the Kedumba Valley, under the Scenic Skyway. The lookout was considered one of the finest views on the Three Sisters in the 1900's. The lookout was named after Chester Melvin Vaniman in 1905, a well-know adventurer and artist from the USA, who visited the Blue Mountains in 1903. [More info.](#)

0.21 | Vanimans Lookout

(180 m 4 mins) Turn right: From Vanimans Lookout, this walk follows the bush track heading away from the bottom of the wooden steps. The track winds around the side of the hill and down the steep metal stairs. At the bottom, the walk comes to the intersection of the Katoomba Falls Round Walk and Juliets Balcony track (unsignposted).

Veer left: From the intersection, this walk follows the long set of wooden steps winding down the side of the hill. After this, the walk flattens out for a short distance then continues up a short set wooden steps to the intersection

of the Round Walk and the Furber Steps track.

Turn right: From the intersection, this walk follows the 'Base of Scenic Railway' signpost down the wooden steps to the bottom, where it comes to the Rainforest Lookout.

0.39 | Rainforest Lookout

Unlike many lookouts in the area, Rainforest Lookout does not offer sweeping valley views. Instead, this lookout offers an opportunity to get up close and personal with the canopy of the rainforest. Spend some time in the cool shade listening to the birds and Witches Leap creek passing by. A sign at the lookout explains that there once were wood-fired barbeques here for picnics, but removed due to the toll on the local environment.

0.39 | Rainforest Lookout

(20 m) Turn right: From the Rainforest Lookout, the track follows the bush track heading past the base of the wooden steps and then through the forest for a short while, until it reaches the signposted intersection of the Underfalls Walk.

0.41 | Optional sidetrip to Katoomba Falls

(180 m 6 mins) Turn left : From the intersection, this walk follows the 'Underfalls Walk' sign down a short set of steps and across a small waterfall using the wooden bridge (This creek flows from Witches Leap all the way down to Veras Grotto). Once past the falls, the track continues through the rainforest, winding along the well-defined path until arriving at Katoomba Falls Lookout, right at the base of the falls. At the end of this side trip, retrace your steps back to the main walk then Turn left.

0.41 | Katoomba Falls

The Katoomba Falls are among the most famous waterfalls in the the Blue Mountains region. The Kedumba River falls about 150 meters in 2 main stages. The Undercliff Track, from the Furber Steps, can be used to access the first landing of the waterfall. The Katoomba Falls can be viewed from most lookouts in the the area, including from the bottom of the falls at Cooks Landing on Federal Pass, or from the track running next to the Kedumba River at the top of the falls. These falls are also a highlight for the trip across the Scenic Skyway.

0.41 | Int of Furber Steps and Katoomba Falls Lookout Tra

(30 m 1 mins) Continue straight: From the intersection, this walk follows the 'Scenic Railway' sign along the bush track, winding through the forest for a short while before passing a large rock overhang with a wooden bench seat underneath. The walk continues down a set of stairs until reaching the signposted 'Queen Victoria Lookout'.

0.44 | Queen Victoria Lookout

(10 m) Continue straight: From the intersection, this walk heads up the short metal staircase to the intersection of the Queen Victoria Lookout at the top.

0.45 | Optional sidetrip to Lynes Point

(10 m) Turn left : From the intersection, this walk follows the bush track heading around the right-hand side of the metal staircase, continuing around under the Queen Victoria Lookout to Lynes Point. At the end of this side trip, retrace your steps back to the main walk then Veer right.

0.45 | Int of Furber Steps and Lynes Point Track

(120 m 8 mins) Turn right: From the intersection, this walk follows the bush track heading away from the short metal staircase, winding along the side of the hill to the top of some concrete steps where there is a 'Furber Steps' signpost. From here, the walk continues down the concrete steps for a short distance until it comes to the signposted 'Furber Lookout'.

Continue straight: From the Furber Lookout, this walk heads down the concrete steps that zigzags steeply down to the bottom of the cliffs. The track then flattens out and continues through the forest with the hand railing on the right, crossing a short boardwalk and coming down to the signposted intersection of the Vera's Grotto track.

0.57 | Optional sidetrip to Vera's Grotto

(30 m 3 mins) Continue straight: From the intersection, the walk follows the 'Vera's Grotto' sign along the bush track, winding down a set of wooden steps to Vera's Grotto Lookout at the bottom. At the end of this side trip, retrace your steps back to the main walk then Turn left.

0.57 | Vera's Grotto

Vera's Grotto is a pleasant little spot located amongst the cascades on Witches Leap creek. This is a great area for lunch on a hot day, as it is always kept cool by the falls and the shade from the surrounding trees. When venturing to the grotto, you may be lucky enough to spot the Whistler and Yellow Robins. Superb Lyrebirds are also heard and even seen frequently in the surrounding area.

0.57 | Int of Furber Steps and Veras Grotto Track

(300 m 10 mins) Turn right: From the intersection, this walk goes down the stairs. These zigzag down the hill and, at several points, go under overhangs in the cliff. The walk continues steeply downhill (occasionally on metal stairs) until reaching an intersection with a bush track signposted 'Federal Pass'.

Turn right: From the bottom of Furber Steps, this walk follows the 'To base of scenic railway' sign keeping the handrail on the left, and following the flat bush track. This track passes through a small gate over a metal bridge at the bottom of the Scenic Railway.

0.87 | Alternate Route Scenic World to Scenic Railway (Bo

(300 m 26 mins) Turn left : From Scenic World, this walk goes down the cliffs using the Scenic Railway. Hang on tight! This 415m-long journey is the world's steepest railway. At the bottom, the track comes to a great viewing platform of the valley. Use of the railway costs \$10 for adults and \$5 for children one-way. Last train normally at 4:45pm (opens at 9am) Now Turn left to join the main walk. [More info.](#)

0.87 | Scenic Railway (Bottom Platform)

(1.3 km 46 mins) Continue straight: From the bridge over the bottom of the Scenic Railway, this walk follows the signs to 'scenic walkway', passing a replica of a mining cart, as well as an old mine. Just past this, the walk comes to a pipeline that runs down the hill collecting fresh water, signposted as drinkable. Continuing past the old mine shafts along the boardwalk, this walk comes to an intersection with a bush track going slightly off to the right. This is signposted as the way to the Landslide.

Continue straight: From the intersection, the walk follows the wide track and signposts towards the 'landslide' (keeping the cliffs on the right). The walk winds along a bush track with small boulders strewn along it. There are a number of old mine shafts just off the track and some interesting historical items. The track continues under Malaita Point before breaking out of the vegetation to a worthy view of the valley, just before the landslide. As the track comes to the old landslide site, it become rougher with plenty of boulders over the track. There are also excellent views of the cliffs above and the landslide as the vegetation is quite sparse here.

2.21 | The Landslide

'The Landslide' is a large rockfall going into the valley approximately 100m. There is a good vantage point for the landslide from under the cliffs to the east, and a great but more distant view from Narrow Neck lookout. The

landslide occurred in 1931 after a few days of rumbling. There has been much debate as to whether this event was helped along by erosion and coal mining in the area at the time.

2.21 | Landslide

(1.6 km 42 mins) Continue straight: From the eastern side of the Landslide, the walk heads across the face of the landslide (keeping the cliff on the right). At this point, the track is quite rough, with frequent boulders making it a slight scramble. On the other side of the landslide, the track narrows and becomes a flat bush track that follows the base of the cliffs. The surrounding trees become quite dense again, adding quite an ambiance to the area. The walk heads along the bottom of the Narrow Neck escarpment, until coming to an intersection with a set of stairs off to the right, signposted as the 'Golden Staircase'.

3.76 | Bottom of Golden Staircase

(430 m 19 mins) Turn right: From the intersection, this walk follows the 'Golden Stairs car park' sign uphill past the termite mound then past the 'Warning - Sections of the Golden Stairs are unfenced and can be slippery when wet' sign. The walk heads up the broad spur along a narrow track, and before long, starts to climb the first set of rock and metal stairs. After this climb, the track is relatively flat for a little while before another climb up similar stairs. Then the walk makes its way around a gully to the base of a cliff. From here the track is flat for a while, heading between the cliff and the fence for about 100m, (passing a 'Caution Rockfall Hazard' sign) before another, smaller climb, up through a gap in the rock to the fenced and signposted 'Botting's L.O.'.

4.19 | Botting's Lookout

Botting's Lookout offers great views over the Jamison Valley and the cliff line, including the Landslide, Malaita Point and the Golden Stairs. A plaque at the lookout states that the lookout was named after Walter Botting (1887-1985), a pioneer trail-maker of the Katoomba District. [More info.](#)

4.19 | Bottings Lookout

(210 m 8 mins) Turn left: From Botting's Lookout, the walk heads up the hill where the track then turns left. The walk continues, steeply in a couple of places, up some eroded sections of track and through a couple of switchbacks. Soon the narrow track mostly flattens out, leading to the signposted 'Golden Stairs' car park on Glenraphael Dr.

4.4 | Golden Staircase car park

(860 m 22 mins) Veer right: From the Golden Stairs car park, this walk follows the dirt road north, down the gentle hill and along the ridge as it undulates up and down for about 1km, before reaching the Sydney Water management trail - this is closed to the public at all times.

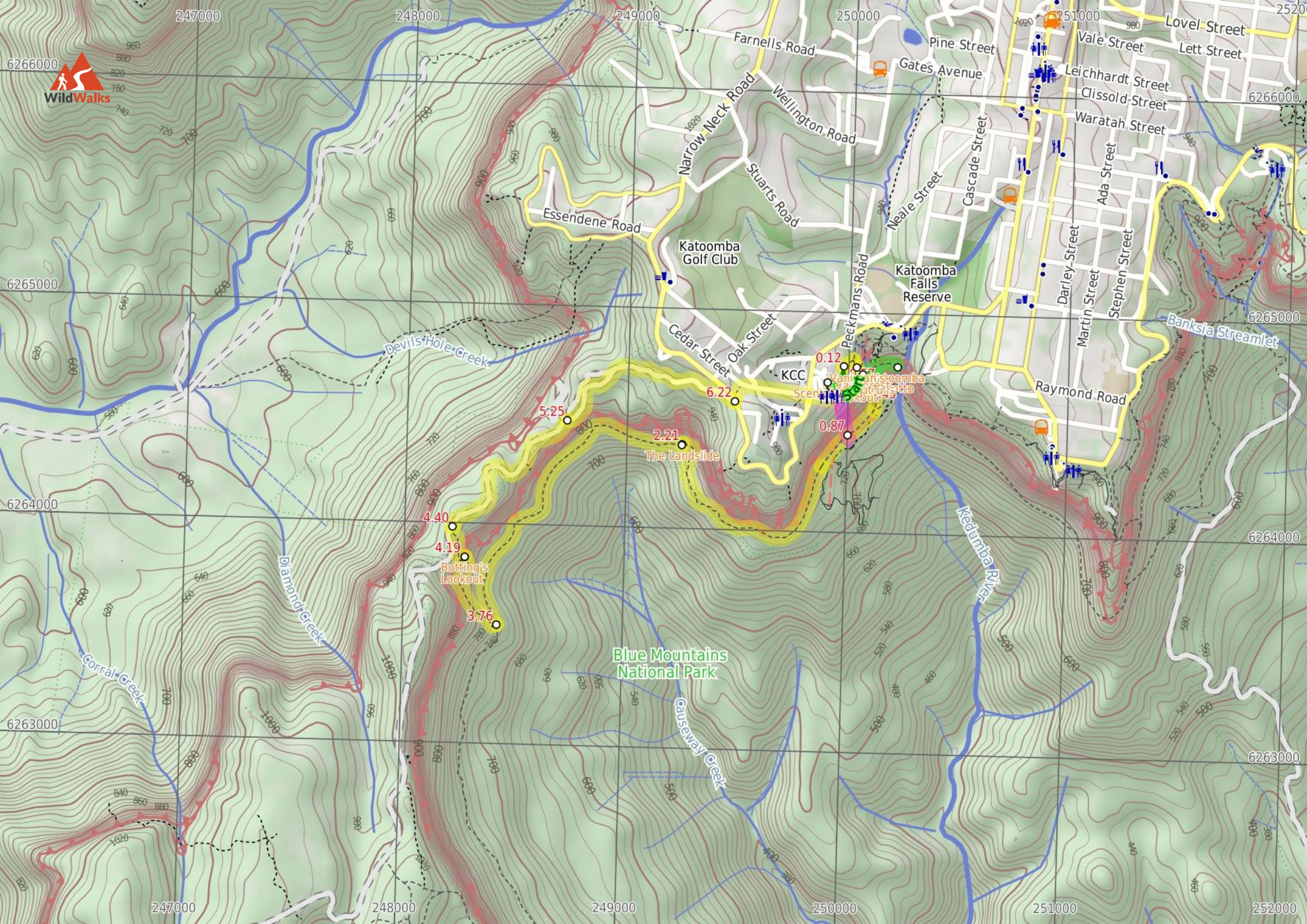
5.25 | Sydney Water pipe service trail

(970 m 26 mins) Veer right: From the intersection, this walk follows the dirt road heading up the hill and undulating along the ridge for about 1km, before it climbs up to the intersection with Cliff Drive.

6.22 | Int of Glenraphael and Cliff Drives

(570 m 11 mins) Turn sharp left: From the intersection, this walk heads up Cliff Drive briefly, then follows the management trail on the right, just past the house. At the end of the trail, this walk turns right onto Violet Street, following this to the front entrance of Scenic World.





Summary navigation sheet for the Scenic World down Furber Steps to Narrow Neck loop



km	From	Up/Dwn	Length	Initial directions (Use full tracknotes and maps for more detail)
Start	Scenic World -33.7286,150.301 (GR Katoomba, 499647)	5 -20	120 m 3 mins	From the Scenic World main entrance, this walk follows the 'Prince Henry Cliff Walk' signs down the concrete steps and around to the back of the building, where it comes to a wooden footbridge that curves around beh...
0.12	End of wooden footbridge -33.7278,150.3016 (GR Katoomba, 500648)	0 -29	90 m 2 mins	Continue straight: From the intersection, this walk follows the bush track down the gentle hill, winding down some wooden steps as the track bends around to the right.
0.21	Vanimans Lookout -33.7278,150.3022 (GR Katoomba, 500648)	7 -16	180 m 4 mins	Turn right: From Vanimans Lookout, this walk follows the bush track heading away from the bottom of the wooden steps.
0.39	Rainforest Lookout -33.7281,150.3025 (GR Katoomba, 501647)	1 0	20 m	Turn right: From the Rainforest Lookout, the track follows the bush track heading past the base of the wooden steps and then through the forest for a short while, until it reaches the signposted intersection of the ...
0.41	Int of Furber Steps and Katoomba Falls Lookout Track -33.7283,150.3025 (GR Katoomba, 501647)	1 -67	180 m 6 mins	Optional sidetrip to Katoomba Falls. Turn left : From the intersection, this walk follows the 'Underfalls Walk' sign down a short set of steps and across a small waterfall using the wooden bridge (This creek flows from Witches Leap all the way down to ...
0.41	Int of Furber Steps and Katoomba Falls Lookout Track -33.7283,150.3025 (GR Katoomba, 501647)	1 -1	30 m 1 mins	Continue straight: From the intersection, this walk follows the 'Scenic Railway' sign along the bush track, winding through the forest for a short while before passing a large rock overhang with a wooden bench seat ...
0.44	Queen Victoria Lookout -33.7285,150.3027 (GR Katoomba, 501647)	0 -1	10 m	Continue straight: From the intersection, this walk heads up the short metal staircase to the intersection of the Queen Victoria Lookout at the top.
0.45	Int of Furber Steps and Lynes Point Track -33.7285,150.3027 (GR Katoomba, 501647)	1 0	10 m	Optional sidetrip to Lynes Point. Turn left : From the intersection, this walk follows the bush track heading around the right-hand side of the metal staircase, continuing around under the Queen Victoria Lookout to Lynes Point.
0.45	Int of Furber Steps and Lynes Point Track -33.7285,150.3027 (GR Katoomba, 501647)	17 -91	120 m 8 mins	Turn right: From the intersection, this walk follows the bush track heading away from the short metal staircase, winding along the side of the hill to the top of some concrete steps where there is a 'Furber Steps' s...
0.57	Int of Furber Steps and Vera's Grotto Track -33.7284,150.3032 (GR Katoomba, 501647)	27 -3	30 m 3 mins	Optional sidetrip to Vera's Grotto. Continue straight: From the intersection, the walk follows the 'Vera's Grotto' sign along the bush track, winding down a set of wooden steps to Vera's Grotto Lookout at the bottom.
0.57	Int of Furber Steps and Veras Grotto Track -33.7284,150.3032 (GR Katoomba, 501647)	15 -90	300 m 10 mins	Turn right: From the intersection, this walk goes down the stairs.
0.87	Scenic World -33.7286,150.301 (GR Katoomba, 499647)	8 -210	300 m 26 mins	Alternate Route Scenic World. Turn left : From Scenic World, this walk goes down the cliffs using the Scenic Railway.
0.87	Scenic Railway (Bottom Platform) -33.7306,150.3017 (GR Katoomba, 500644)	175 -178	1.3 km 46 mins	Continue straight: From the bridge over the bottom of the Scenic Railway, this walk follows the signs to 'scenic walkway', passing a replica of a mining cart, as well as an old mine.
2.21	Landslide -33.731,150.2936 (GR Katoomba, 493644)	128 -123	1.6 km 42 mins	Continue straight: From the eastern side of the Landslide, the walk heads across the face of the landslide (keeping the cliff on the right).
3.76	Bottom of Golden Staircase -33.7384,150.2845 (GR Katoomba, 484635)	177 -41	430 m 19 mins	Turn right: From the intersection, this walk follows the 'Golden Stairs car park' sign uphill past the termite mound then past the 'Warning - Sections of the Golden Stairs are unfenced and can be slippery when wet' sign.
4.19	Bottings Lookout -33.7356,150.283 (GR Katoomba, 483638)	80 -9	210 m 8 mins	Turn left: From Botting's Lookout, the walk heads up the hill where the track then turns left.
4.40	Golden Staircase car park -33.7343,150.2824 (GR Katoomba, 482640)	30 -81	860 m 22 mins	Veer right: From the Golden Stairs car park, this walk follows the dirt road north, down the gentle hill and along the ridge as it undulates up and down for about 1km, before reaching the Sydney Water management tra...

Summary navigation sheet for the Scenic World down Furber Steps to Narrow Neck loop



km	From	Up/Dwn	Length	Initial directions (Use full tracknotes and maps for more detail)
5.25	Sydney Water pipe service trail -33.73,150.288 (GR Katoomba, 487645)	126 -48	970 m 26 mins	Veer right: From the intersection, this walk follows the dirt road heading up the hill and undulating along the ridge for about 1km, before it climbs up to the intersection with Cliff Drive.
6.22	Int of Glenraphael and Cliff Drives -33.7292,150.2962 (GR Katoomba, 495646)	7 -34	570 m 11 mins	Turn sharp left: From the intersection, this walk heads up Cliff Drive briefly, then follows the management trail on the right, just past the house.